



**POCKET
CATALOGUE**



Adapters / Weld-On Kits	5
Adapters / Quick Fit Plate	6
Bale Spears	8
Bale Spears / Bale Grapples	12
Manure Forks	13
Stone Forks	14
Buckets / Skidsteer	17
Buckets / Front End Loader	23
Buckets / Telescopic Handler	26
Bucket Accessories	27
4-in-1 Bucket / High Dump Bucket	28
Buckets / Side Discharge	29
Grapples	30
Grapples / Utility.	31
Grapples / Root Rake & Brush.	32
Grapples Brush / Tree Spade.	33
Silage Attachments	34
Silage Blades	35
Alley Scrapers	36
Rotary Brooms.	37
Miscellaneous Attachments	38
Pallet Forks	40
Dirt Blade / Laser Grader / Limb Saw	44
Weight Box / Boom Poles / Bulk Bag Handler	45

Snow Index on the next page ->



Edge Flex	46
V-Blades SixWay Blade	48
Spreaders, Buckets & Baskets	49
Snow Blades	50
Snow Pushers	52
Snow Pushers Specialty	56
Snow Wings	57
Wiring Options / Blade Options	60
Blade Options	61
Quick Disconnect Mounts	62
Under Mounts	64
Hydraulic Rotary Brooms	65

This pocket catalogue is for quick product reference, and may not contain all features and options available.

For more detail and complete listing of features and options available see your dealer or visit www.horstwelding.com

Weld-On Kits



PICTURED: WOKA0600
ALO QTach Weld-On Kit



PICTURED: WOKJD640
JD 640 Weld-On Kit

Weld-On Kits



PICTURED: WOKB0500
Universal Skidsteer Weld-On-Kit



PICTURED: WOKB0500K
Universal Skidsteer Weld-On-Kit
c/w 15° Kickout

John Deere 600 Style Carrier



PICTURED: ADJD640

- Compatible with classic John Deere 600 series quick attach buckets
- Approx. weight: 175 lb.

*Build to spec adapters available: To accept choice of attach/to fit choice of loader.
Example: Attachment side JD 245/loader side JD 640. Call for pricing. Many other configurations are available upon request.*

Euro Quick Fit Plate (Trigger Lock)



PICTURED: ADA0600

- 5,500 lb. capacity
- Now with TriggerLock - auto latching mechanism activated by attachment
- Compatible to Euro tool carrier attachments such as the Alo / Quicke or John Deere Global
- Convenient single handle release with spring return on lock pins
- Approx. weight: 150 lb.
- Optional hydraulic activated

Euro Quick Fit Plate (To Fit Universal Skidsteer)



PICTURED: ADA0600B0500

- To pick up Euro tool carrier attachments such as the Alo / Quicke or John Deere Global with your skidsteer loader
- Approx. weight: 195 lb.
- Optional hydraulic activated

Euro Quick Fit Plate (To Fit JD 600 Series)



PICTURED: ADA0600JD640

- To pick up Euro tool carrier attachments such as the Alo / Quicke or John Deere Global with your John Deere 600 Series loader
- Approx weight: 190 lb.
- Optional hydraulic activated

Industrial Carriers To Fit Tractor Loader Backhoe



PICTURED: ADJRBE

- Fast change of industrial attachments
- (Manual lock or optional hydraulic lock)
- Horizontal locking pins
- Common OEM configurations available
- Approximate weight: 325 lbs

Regular Duty Universal Skidsteer Quick Fit Plate



PICTURED: BOQF10

- 3,500 lb. capacity
- Compatible to universal skidsteer attachments
- Spring-loaded over-centre lever lock
- Ideal for compact to midsize loaders
- Approx. weight: 135 lb.

Popular Configurations Shown Below



PICTURED: BOQF10A0600

Regular Duty Euro / Global
Skidsteer Quick Fit Plate



PICTURED: BOQF10JD440540

Regular Duty JD 400/500 Series
Skidsteer Quick Fit Plate

Heavy Duty Universal Skidsteer Quick Fit Plate



PICTURED: BOQF10H

- 5,500 lb. capacity
- Same features as above regular duty
- Universal quick fit plate
- Ideal for mid-size to industrial loaders
- Approx. weight: 250 lb.

Heavy Duty Universal Skidsteer Quick Fit Plate with Tilt



PICTURED: BOQF10H3PHT

- Utilize skidsteer attachments on 3PH
- Fits 3PH Cat 1 and 2
- 5,500 lb. capacity
- Approx. weight: 500 lb.
- Comes with 4" x 8" stroke cylinder
- Hoses not included

Bale Spears

Single Three Point Hitch Spear



PICTURED: SE3PH39

- Fits both category I & II
- Kverneland tine
- 2 stabilizer tines
- Reese Receiver/ball hitch (Ball hitch not included)
- 2,000 lb. capacity @ 24" L.C.
- Available with 39" or 49" tine
- Approx. weight: 87 lb.

39" Tine (34" useable length)

49" Tine (44" useable length)

Double Three Point Hitch Spear



PICTURED: DE3PH39

- Fits both category I & II
- Kverneland tine
- Reese Receiver/ball hitch (Ball hitch not included)
- Available with 39" or 49" tines
- Approx. weight: 117 lb.
- 2,000 lb. capacity @ 24" L.C.

39" Tine (34" useable length)

49" Tine (44" useable length)

Single Prong Bucket Spear



PICTURED: BS4039

- Kverneland tine
- 2,000 lb. capacity @ 24" L.C.
- Adaptable to most buckets
- No tools or bolts needed
- c/w chain & tightener
- Approx. weight: 86 lb.

39" Tine (34" useable length)

Double Prong Bucket Spear



PICTURED: BSD4039

- Kverneland tines @ 30" spacing
- Same as above but with extra tine to handle large square bales
- Approx. weight: 112 lb.
- 2,000 lb. capacity @ 24" L.C.

39" Tine (34" useable length)

Single Prong Bale Spear



PICTURED: SE5039

- Kverneland tine
- Easy stabbing & removal
- 2,000 lb. capacity @ 24" L.C.
- Available with 39" or 49" tine
- Two stabilizer tines
- Approx. weight: 165 lb.
- Frame width 50"

39" Tine (34" useable length)

49" Tine (44" useable length)

Double Prong Bale Spear



PICTURED: DE5039

- Kverneland tines @ 30" spacing
- Works well for either round bales or large square bales
- Available with 32", 39" or 49" tines
- Approx. weight: 185 lb.
- 4,000 lb. capacity @ 24" L.C.
- Frame width 50"

32" Tine (27" useable length)

39" Tine (34" useable length)

49" Tine (44" useable length)

Not to be used for carrying 2 bales stacked on top of each other

Double Prong Bale Spear c/w Guard



PICTURED: DE5539

- Same as above except with bolt on guard
- Added protection for handling large square bales 2 high
- Safety foot for roll over protection while in storage position
- 50" overall height
- Available with 32", 39" or 49" tines
- Approx. weight: 305 lb.
- 4,000 lb. capacity @ 24" L.C.
- Frame width 50"

32" Tine (27" useable length)

39" Tine (34" useable length)

49" Tine (44" useable length)

Bale Spears

Three Prong Bale Spear



PICTURED: TE5039

- Kverneland tines @ 23" spacing
- Made to handle large 4' x 4' x 8' square bales
- Available with 32", 39" or 49" tines
- Frame width 50"
- Approx. weight: 210 lb.
- 5,000 lb. capacity @ 24" L.C.

32" Tine (27" useable length)
39" Tine (34" useable length)
49" Tine (44" useable length)

Not to be used for carrying 2 bales stacked on top of each other

Three Prong Bale Spear c/w Guard



PICTURED: TE5539

- Same as above except with bolt on guard
- Added protection for handling large square bales 2 high
- Safety foot for roll over protection while in storage position
- 50" overall height
- Available with 32", 39" or 49" tines
- Approx. weight: 330 lb.
- 5,000 lb. capacity @ 24" L.C.

32" Tine (27" useable length)
39" Tine (34" useable length)
49" Tine (44" useable length)

Three Prong Bale Spear c/w Adjustable Guard



PICTURED: TE55039

- 50" high frame with adjustable guard posts for safe handling of large square bales up to 3 high
- Safety foot for roll over protection while in storage position
- Guard height adjustable from 50" to 84"
- Frame width 56"
- Available with 32", 39" or 49" tines
- Approx. weight: 365 lb.
- 6,000 lb. capacity @ 24" L.C.
- Kverneland tines @ 23" spacing

32" Tine (27" useable length)
39" Tine (34" useable length)
49" Tine (44" useable length)

Four Prong Bale Spear c/w Adjustable Guard



PICTURED: FE55039

- Designed specifically for carrying large 4'x4'x8' square bales, 2 high
- Safety foot for roll over protection while in storage position
- Guard height adjustable from 50" to 84"
- Frame width 66"
- Available with 39" or 49" tines
- Approx. weight: 415 lb.
- 6,000 lb. capacity @ 24" L.C.
- Kverneland tines @ 18-3/4" spacing

39" Tine (34" useable length)
49" Tine (44" useable length)

Four Prong Bale Spear for Round Bales



PICTURED: FE10039

- Designed specifically for carrying 2 round bales
- Can carry 2 round bales up to 6' diameter
- Frame width 100"
- Approx. weight: 340 lb.
- 4,000 lb. capacity @ 24" L.C.
- Kverneland tines, each side @ 29" spacing

Four Prong Bale Spear w/ Rigid Frame



PICTURED: FE7839

- Ideal for handling stacked large square bales
- 80" overall height
- Safety foot for roll over protection while in storage position
- Frame width 72"
- Conus 1 bushings in upper frame for optional stabilizers
- Approx. weight: 580 lb.
- 6,000 lb. capacity @ 24" L.C.
- Kverneland tines @ 21-5/8" spacing

Five Prong Bale Spear w/ Rigid Frame



PICTURED: QE57239

- Ideal for handling stacked large square bales
- 74" overall height
- Safety foot for roll over protection while in storage position
- Frame width 72"
- Approx. weight: 545 lb.
- 8,000 lb. capacity @ 24" L.C.
- Kverneland tines @ 17" spacing

Hydraulic Bale Claw



PICTURED: BC647232

- Ideal for handling stacked large square bales
- 12 hydraulic claws rotate into stack for secure handling
- 72" overall height
- Frame width 64"
- 6000 lbs capacity
- 3 Kverneland tines @ 23" spacing
- Approximate weight 1090 lbs

Round Bale Grapple



PICTURED: BG4000

- Designed for gentle handling of heavy wrapped silage bales
- Lockable arms, one arm can be locked in a fixed position using pins so that all movement occurs in the other arm.
- Useful for stacking
- Works with up to 5' diameter bales
- 1,800 lb. capacity
- Approx. weight: 570 lb.

Square Bale Grapple



PICTURED: BG6000

- Same specs and design as round bale grapple with arms to accept square bales
- 4 - 6 ft long and round bales 5-6 ft diameter
- Opens up to 84"
- 2,000 lb. capacity
- Lockable arms, one arm can be locked in a fixed position using pins so that all movement occurs in the other arm
- Useful for stacking
- Approx. weight: 590 lb.

Square Bale Squeeze



PICTURED: BG7000

- 86" extended – 30" retracted
- Slim brace arm design allows for tight stacking of bales
- Arms are 50" long, 20" tall
- Dual 2 1/2" x 28" stroke cylinder
- 3,000 lb capacity
- Approx. weight: 810 lb.

Manure Fork (Cranked Kverneland Tine)



PICTURED: MFE66

- LDFE 32" Conus I cranked Kverneland tines (28" useable length)
- MFE 35" Conus I cranked Kverneland tines (31" useable length)
- Superior penetration
- Flat top acts as level indicator
- Available widths from 42" to 96"
- 6 to 13 tines depending on fork width

Manure Fork with Cranked Kverneland Tine & Skidsteer Grapple



PICTURED: MFE72GRS66

- Designed for use on skidsteers with limited clearance for grapple arms
- Comes with 2½" x 8" cylinders
- Available widths from 66" to 96"

Manure Fork with Cranked Kverneland Tine & Regular Utility Grapple



PICTURED: MFE66GR66

- Popular Packages available with 66", 72", 84", and 96" manure forks
- Opens up to 70"
- Comes with 2 1/2" x 8" cylinders

Stone Forks

Stone Fork (Cranked Kverneland Tine)



PICTURED: SF96

- 39" Conus II cranked Kverneland tines (32" useable length)
- Tines installed on 4" centres
- Ruggedly built
- Heavy duty back guard with 3 lb expanded metal grating
- Available widths from 60" to 120"
- 25.5" overall height

Stone Fork (Retainer Style Tine) Compact Duty



PICTURED: SFRC48

- 1" shaft diameter
- 2 1/2" spacing between tines
- Points are 5/8" thick, 400 Brinell high strength steel
- 23" high
- 35" deep
- 2,000 lb. capacity
- Available widths from 48" to 70"

Stone Fork (Retainer Style Tine) Regular Duty



PICTURED: SFR70

- 1 1/4" shaft diameter
- 2 1/2" spacing between tines
- Points are 5/8" thick, 400 Brinell high strength steel
- 23" high
- 40" deep
- 5,500 lb. capacity
- Available widths from 55" to 92"

Stone Fork (Retainer Style Tine) Heavy Duty



PICTURED: SFRH77

- 1 3/4" shaft diameter
- 2 3/4" spacing between tines
- Points are 3/4" thick, 400 Brinell high strength steel
- 31" high
- 50" deep
- 9,500 lb. capacity
- Available widths from 77" to 108"

Regular Duty Stone Fork with Retainer Style Tine & Skidsteer Grapple



PICTURED: SFR77GRS66

- Designed for use on skidsteers with limited clearance for grapple arms
- Same great features as regular duty stone forks
- Comes with 2½" x 8" cylinders
- Available widths from 70" to 92"
- 2½" spacing between tines

Regular Duty Stone Fork with Retainer Style Tine & Regular Utility Grapple



PICTURED: SFR77GR66

- Same great features as regular duty stone forks
- Popular packages for 77", 84", and 92" RD stone forks
- Opens up to 70"
- Comes with 2½" x 8" cylinders
- 2½" spacing between tines

Heavy Duty Stone Fork with Retainer Style Tine & Regular Utility Grapple



PICTURED: SFRH77GR66

- Same great features as heavy duty stone forks
- Popular packages for 77", 85", 90", and 94" HD stone forks
- Opens up to 70"
- Comes with 2½" x 8" cylinders
- 2¾" spacing between tines

Stone Forks

Stone Fork (Retainer Style Tine) with Split Grapple - Regular Duty



PICTURED: SFRDB70

- Two independent grapples
- Ideal for brush & rock clean up
- Ideal for awkward abrasive loads
- 30" overall height
- 40" overall depth
- Comes with 2½" x 8" cylinders
- 5,500 lb. capacity
- Available widths from 62" to 92"

Stone Fork (Retainer Style Tine) with Split Grapple - Heavy Duty



PICTURED: SFRHDB77

- Two independent grapples
- Ideal for brush & rock clean up
- Ideal for awkward abrasive loads
- 38" overall height
- 44" overall depth
- Comes with 2½" x 8" cylinders
- 9,500 lb. capacity
- Available widths from 77" to 108"

Stone Fork - Landscape with Power Rake



PICTURED: SFRRL72

- ¾" shaft diameter
- 1¾" spacing between tines
- Points are ½" thick, 400 Brinell high strength steel
- 32" high
- 35½" deep
- Ideal for picking up both windrows of stones and loose stones in soil being prepared for seed beds
- Available widths from 72" to 108"

Compact Utility Bucket (Skidsteer)



PICTURED: SBC60

- 1/8" material, 3/16" end plates
- 1/2 x 4 bevelled cutting edge
- 21" deep, 18" high
- 65° slope on back of bucket
- Reinforced round back and end plates for strength, easy filling & clean out
- Flat top acts as level indicator
- Drilled for standard bolt on cutting edge
- Available widths from 36" to 72"

Standard Skidsteer Bucket Regular Duty



PICTURED: SB72

- 3/16" material, 1/4" end plates
- 3/4 x 4 bevelled cutting edge
- 28" deep, 26" high
- Reinforced top lip, round back and end plates for strength, easy filling & clean out
- Flat top acts as level indicator
- Tapered end plates are self-cleaning and reduces material build-up
- Drilled for standard bolt on cutting edge
- Available widths from 48" to 96"

Standard Skidsteer Bucket Heavy Duty



PICTURED: SB72HD

- 1/4" material, 1/4" end plates
- 3/4 x 6 bevelled cutting edge
- 30" deep, 26" high
- Reinforced top lip, round back and end plates for strength, easy filling & clean out
- Flat top acts as level indicator
- Tapered end plates are self-cleaning and reduces material build-up
- Drilled for standard bolt on cutting edge
- Available widths from 48" to 96"

Standard (Skidsteer) Bucket & Regular Utility Grapple



PICTURED: SB72GR66

- Opens up to 70"
- Comes with 2½" x 8" cylinders
- Available in widths from 72" to 96"

Standard Skidsteer Bucket & Skidsteer Grapple



PICTURED: SB72GRS66

- Designed for use on skidsteers with limited clearance for grapple arms
- Comes with 2½" x 8" cylinders
- Available widths from 66" to 96"

Standard Skidsteer Bucket - Long Lip - Heavy Duty



PICTURED: SB7840HD

- 1/4" material, 1/4" end plates
- 3/4 X 6 bevelled cutting edge
- Reinforced top lip
- 40" deep, 24" high
- Reinforced round back and end plates for strength, easy filling & clean out
- Flat top acts as level indicator
- Tapered end plates are self-cleaning and reduces material build-up
- Drilled for standard bolt on cutting edge
- Available widths from 72" to 96"

High Volume Skidsteer Bucket Regular Duty



PICTURED: SBHV66

- 3/16" material, 1/4" end plates
- 3/4 x 4 bevelled cutting edge
- Reinforced top lip
- 34" deep, 31" high
- Reinforced round back and end plates for strength, easy filling & clean out
- Flat top acts as level indicator
- Tapered end plates are self-cleaning and reduces material build-up
- Drilled for standard bolt on cutting edge
- Available widths from 60" to 108"

High Volume Skidsteer Bucket Heavy Duty



PICTURED: SBHV7840HD

- 1/4" material, 1/4" end plates
- 3/4 x 6 bevelled cutting edge
- Reinforced top lip
- 36" deep, 31" high
- Reinforced round back and end plates for strength, easy filling & clean out
- Flat top acts as level indicator
- Tapered end plates are self-cleaning and reduces material build-up
- Drilled for standard bolt on cutting edge
- Available widths from 60" to 108"

High Volume Skidsteer Bucket - Long Lip - Heavy Duty



PICTURED: SBHV9640HD

- 1/4" material, 1/4" end plates
- 3/4 X 6 bevelled cutting edge
- Reinforced top lip
- 38" deep, 31" high
- Reinforced round back and end plates for strength, easy filling & clean out
- Flat top acts as level indicator
- Tapered end plates are self-cleaning and reduces material build-up
- Drilled for standard bolt on cutting edge
- Available widths from 72" to 96"

High Volume Skidsteer Snow Bucket



PICTURED: SBSN66

- 3/16" material, 1/4" end plates
- 3/4 x 4 bevelled cutting edge
- Reinforced top lip
- 39" deep, 31" high
- Screened back for better visibility
- Reinforced round back and end plates for strength, easy filling & clean out
- Flat top acts as level indicator
- Tapered end plates are self-cleaning and reduces material build-up
- Drilled for standard bolt on cutting edge
- Available widths from 60" to 120"

High Volume Skidsteer Snow Basket



PICTURED: SBSB72

- Profile 39" deep and 31" high
- Tapered end plates
- Tall rounded end plates for increased capacity
- Excellent operator visibility
- Drilled for standard bolt on cutting edge
- Available widths from 60" to 120"

Produce Skidsteer Bucket



PICTURED: SBP66

- No sharp edges for gentle handling of produce
- Screened back for better visibility
- 31" deep, 31" high
- Made of the same material as standard bucket
- Available widths from 60" to 84"
- Drilled with counter sink holes for special produce bolt on cutting edge

Compact Low Profile Skidsteer Bucket



PICTURED: SBC481828

- 1/8" material, 3/16" end plates
- 1/2 x 4 bevelled cutting edge
- 26" deep, 17" high
- 65° slope on back of bucket
- Reinforced round back and end plates for strength, easy filling & clean out
- Longer base enables operator to see cutting edge of bucket
- Flat top acts as level indicator
- Drilled for standard bolt on cutting edge
- Available widths from 36" to 60"

Low Profile Skidsteer Bucket Regular Duty



PICTURED: SBLP66

- 3/16" material, 1/4" end plates
- 3/4 x 4 bevelled cutting edge
- Reinforced top lip
- 32" deep, 19" high
- Lower back and longer base enables operator to see cutting edge of bucket
- Tapered end plates are self-cleaning and reduces material build-up
- Drilled for standard bolt on cutting edge
- Available widths from 48" to 84"

Low Profile Skidsteer Bucket Heavy Duty



PICTURED: SBLP66HD

- 1/4" material, 1/4" end plates
- 3/4 x 6 bevelled cutting edge
- Reinforced top lip
- 34" deep, 19" high
- Lower back and longer base enables operator to see cutting edge of bucket
- Tapered end plates are self-cleaning and reduces material build-up
- Drilled for standard bolt on cutting edge
- Available widths from 48" to 96"

Low Profile Skidsteer Bucket c/w Digging Teeth - Regular Duty



PICTURED: SBLP72T8

- 3/16" material, 1/4" end plates
- 3/4 x 4 bevelled cutting edge
- Reinforced top lip
- 32" deep, 19" high
- Lower back and longer base enables operator to see cutting edge of bucket
- Tapered end plates are self-cleaning and reduces material build-up
- Available widths from 48" to 84"

Low Profile Skidsteer Bucket c/w Digging Teeth - Heavy Duty



PICTURED: SBLP72HDT8

- 1/4" material, 1/4" end plates
- 3/4 x 6 bevelled cutting edge
- Reinforced top lip
- 34" deep, 19" high
- Lower back and longer base enables operator to see cutting edge of bucket
- Tapered end plates are self-cleaning and reduces material build-up
- Available widths from 48" to 96"

Low Profile Skidsteer Bucket & Skidsteer Grapple



PICTURED: SBLP72GRS66

- Designed for use on skidsteers with limited clearance for grapple arms
- Comes with 2 1/2" x 8" cylinders
- Available widths from 66" to 96"

Compact Utility Bucket Front End Loader



PICTURED: MBC60

- 1/8" material, 3/16" end plates
- 1/2 x 4 bevelled cutting edge
- 19" deep, 19" high
- 80° slope on back of bucket
- Reinforced round back and end plates for strength, easy filling & clean out
- Flat top acts as level indicator
- Drilled for standard bolt on cutting edge
- Available widths from 36" to 72"

NEW

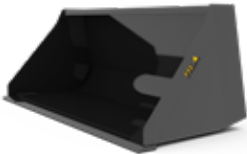
Compact Utility Bucket Front End Loader



PICTURED: MBC662122

- 1/8" material, 3/16" end plates
- 1/2 X 4 bevelled cutting edge
- 22" deep, 21" high
- 70° slope on back of bucket
- Reinforced round back and end plates for strength, easy filling & clean out
- Flat top acts as level indicator
- Drilled for standard bolt on cutting edge
- Available widths from 48" to 72"

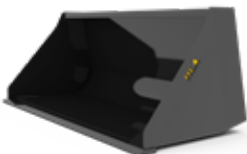
Standard Front End Loader Bucket Regular Duty



PICTURED: MB66

- 3/16" material, 1/4" end plates
- 3/4 x 4 bevelled cutting edge
- 28" deep, 25" high
- Reinforced round back and end plates for strength, easy filling & clean out
- Flat top acts as level indicator
- Tapered end plates are self-cleaning and reduces material build-up
- Drilled for standard bolt on cutting edge
- Available in widths from 48" to 108"

Standard Front End Loader Bucket Heavy Duty



PICTURED: MB66HD

- 1/4" material, 1/4" end plates
- 3/4 x 6 bevelled cutting edge
- Reinforced top lip
- 30" deep, 25" high
- Reinforced round back and end plates for strength, easy filling & clean out
- Flat top acts as level indicator
- Tapered end plates are self-cleaning and reduces material build-up
- Drilled for standard bolt on cutting edge
- Available in widths from 48" to 108"

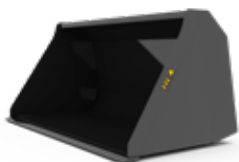
High Volume Front End Loader Bucket Regular Duty



PICTURED: MBHV66

- 3/16" material, 1/4" end plates
- 3/4 x 4 bevelled cutting edge
- Reinforced top lip
- 34" deep, 30" high
- Reinforced round back and end plates for strength, easy filling & clean out
- Flat top acts as level indicator
- Tapered end plates are self-cleaning and reduces material build-up
- Drilled for standard bolt on cutting edge
- Available widths from 60" to 108"

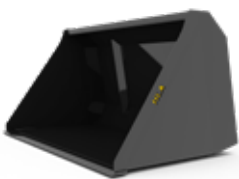
High Volume Front End Loader Bucket Heavy Duty



PICTURED: MBHV66HD

- 1/4" material, 1/4" end plates
- 3/4 x 6 bevelled cutting edge
- Reinforced top lip
- 36" deep, 30" high
- Reinforced round back and end plates for strength, easy filling & clean out
- Flat top acts as level indicator
- Tapered end plates are self-cleaning and reduces material build-up
- Drilled for standard bolt on cutting edge
- Available widths from 60" to 120"

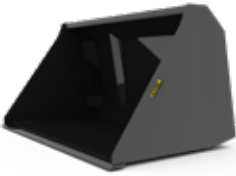
Extra High Volume Front End Loader Bucket - Regular Duty



PICTURED: MBHVX66

- 3/16" material, 1/4" end plates
- 3/4 x 4 bevelled cutting edge
- Reinforced top lip
- 39" deep, 34" high
- Reinforced round back and end plates for strength, easy filling & clean out
- Flat top acts as level indicator
- Tapered end plates are self-cleaning and reduces material build-up
- Drilled for standard bolt on cutting edge
- Available widths from 60" to 108"

Extra High Volume Front End Loader Bucket - Heavy Duty



PICTURED: MBHVX66HD

- ¼" material, ¼" end plates
- ¾ x 6 bevelled cutting edge
- Reinforced top lip
- 41" deep, 34" high
- Reinforced round back and end plates for strength, easy filling & clean out
- Flat top acts as level indicator
- Tapered end plates are self-cleaning and reduces material build-up
- Drilled for standard bolt on cutting edge
- Available widths from 60" to 120"

Standard (Front End Loader) Bucket & Regular Utility Grapple



PICTURED: MB72GR66

- Opens up to 70"
- Comes with 2½" x 8" cylinders
- Available widths from 72" to 96"

Telescopic Handler Bucket Standard



PICTURED: THMB84

- 3/16" material, 1/4" end plates
- 3/4 x 6 bevelled cutting edge
- Reinforced top lip
- 43" deep, 35" high
- 3/4 x 8 bolt-on double bevel edge optional
- Available widths from 84" to 108"
- Drilled for standard bolt on cutting edge

Telescopic Handler Bucket High Volume



PICTURED: THMBHV84

- 1/4" material, 1/4" end plates
- 3/4 x 6 bevelled cutting edge
- Reinforced top lip
- 47" deep, 41" high
- 3/4 x 8 bolt-on double bevel edge optional
- Available widths from 84" to 108"
- Drilled for standard bolt on cutting edge

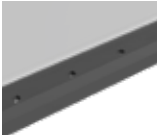
Telescopic Handler Bucket Extra High Volume



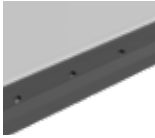
PICTURED: THMBHVX78

- 1/4" material, 1/4" end plates
- 3/4 x 6 bevelled cutting edge
- Reinforced top lip
- 55" deep, 46" high
- 3/4 x 8 bolt-on double bevel edge optional
- Available widths from 84" to 108"
- Drilled for standard bolt on cutting edge

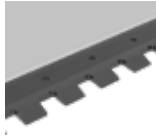
Bucket Accessories



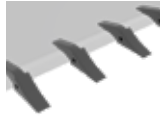
PICTURED: 346CEB
3/4 x 6 Double Bevel
Bolt On Cutting Edge
c/w Bolts & Nuts



PICTURED: 348CEB
3/4 x 8 Double Bevel
Bolt On Cutting Edge
c/w Bolts & Nuts



PICTURED: 346CESB
3/4 x 6 Single Bevel
Serrated Bolt On
Cutting Edge c/w
Bolts & Nuts



PICTURED: RTMBK
Knock On Ripper Teeth
c/w Weld On Adapter &
Flex Pin

Tooth Bar Bolt-On



PICTURED: TB72 (bucket not included)

- Designed to fit select HLA bucket models MB, MBHD, MBHV, MBHVHD, MBHVX, MBHVXHD, SB, SBHD, SBLP, SBLPHD, SBHV, SBHVHD
- Easy to remove replaceable teeth



Compact Tooth Bar Bolt-On



PICTURED: TBC60 (bucket not included)

- Designed to fit HLA compact bucket models MBC, SBC, SBC1828, SBC2122
- Easy to remove replaceable teeth

4-in-1 Bucket / High Dump Bucket

4 - In - 1 Bucket (Skidsteer & Front End Loader)



PICTURED: SBFN066

- Includes 2½" x 8" cylinders
- Main bucket material ¼"
- 3/8" end plates
- 3/8" clam floor bottom
- Skidsteer - 29" deep, 20" high
- Loader - 33" deep, 26" high
- Drilled for standard bolt on cutting edge
- Available widths from 66" to 84"

High Dump Bucket



PICTURED: HRBHV72 in lowered position

- High dump bucket increases dump out height up to 48"
- Exclusive flat bottom bucket design allows for easier clean out & no capacity sacrifice
- Compact 28" deep, 21" high
- Standard 39" deep, 29" high
- High Volume 39" deep, 33" high
- Soft stop cylinder for reduced vibration
- Drilled for standard bolt on cutting edge
- Available widths from 36" to 96"



PICTURED: Bucket in dump position

Side Discharge Sawdust Bucket



PICTURED: SS72

- Minimum 12 GPM required
- Hydraulic drive (coupled direct)
- Beater to prevent bridging
- Discharge from either side of machine
- Available in chevron or cleated belt models
- Two hydraulic motors on discharge belt (72", 84", and 96" only)
- Optional 3 point hitch mount c/w cylinder
- Optional agitator speed control valve
- Available widths from 60" to 96"
- 44"H x 57"L outside dimensions
- Bolted adaptation for loader quick-tach. Easily convert to most loaders
- Optional CAT 2 Three Point Hitch Mount c/w Tilting Cylinder

Side Discharge Sand Bucket



PICTURED: SSB72

- Minimum 12 GPM required
- Made of same material as sawdust bucket
- Baffle brace and beater to improve flow and keep weight off belt
- Two hydraulic motors on discharge belt (72", 84", and 96" only)
- Optional 3 point hitch mount c/w cylinder
- Optional agitator speed control valve
- Available widths from 60" to 96"
- 34"H x 50"L outside dimensions
- Bolted adaptation for loader quick-tach. Easily convert to most loaders
- Optional CAT 2 Three Point Hitch Mount c/w Tilting Cylinder

Side Discharge Straw/Lime Bucket



PICTURED: SST84

- Minimum 12 GPM required
- Agitator prevents material bridging
- Secondary metering drum regulates flow onto the belt
- Mesh in back panel for increased visibility
- 12" wide high abrasion rubber belt with 1-1/2" paddles
- Discharge from either side of the machine
- Conveyor assembly removable for accessibility
- Flared design to ensure loading along a wall
- Optional agitator speed control valve
- Available widths from 72" to 96"
- 59"H x 58"L outside dimensions
- Bolted adaptation for loader quick-tach. Easily convert to most loaders
- Optional CAT 2 Three Point Hitch Mount c/w Tilting Cylinder

Grapples

Compact Scrap Grapple Bucket - Skidsteer



PICTURED: SGB48

- 3/16" material, 1/4" end plates
- 3/4 X 4 bevelled cutting edge
- Single grapple arm
- 26" overall height
- 26" overall depth
- Opens to 36"
- Comes with 2 1/2" x 8" cylinder
- Drilled for standard bolt on cutting edge
- Available in widths from 36" to 60"

Scrap Grapple Bucket - Skidsteer



PICTURED: SGB66

- Two independent grapples
- 1/4" material, 3/8" end plates
- 3/4 X 6 bevelled cutting edge
- Ideal for awkward abrasive loads
- 31" overall height
- 34" overall depth
- Comes with 2 1/2" x 8" cylinders
- Drilled for standard bolt on cutting edge
- Available in widths from 54" to 78"

Debris Grapple Fork



PICTURED: SDB66

- Two independent grapples
- Replaceable tempered tines eliminate the need for a support bar at points which reduces lodging and jamming when emptying bucket
- Designed to pick-up brush and other debris while leaving the dirt
- 39" Conus II cranked Kverneland tines (32" usable length)
- Cylinders completely protected from debris
- Comes with 2 1/2" x 8" cylinders
- 6" tine centres
- Available widths from 66" to 84"

Compact Utility Grapple



PICTURED: GRC42 (fork not included)

- To be fitted on models SBC, MBC & LDFE
- Comes with heavy duty welded cylinder
- Opens up to 37½"
- Available for 42" and 48" forks

Regular Utility Grapple



PICTURED: GR66 (bucket not included)

- Can be fitted to models SB, SBHV, MB, MBHV, MFE & SFR
- Accommodates 4ft round bales
- Works equally well on other materials such as manure, etc.
- Opens up to 70"
- Available for 72", 84", and 96" forks and buckets
- Comes with cylinders

Large Utility Grapple



PICTURED: GRL84 (bucket not included)

- Can be fitted to models SB, SBHV, MB, MBHV, MBHVX, & THMB (Does not fit THMBHV & THMBHVX buckets)
- Specific heavy duty design for handling large round and square bales
- Opens up to 72"
- Removable / bolt-on mounting posts
- Accommodates 6ft round bales
- Available for 84", 96", and 108" forks or buckets
- Comes with cylinders

Extra Large Utility Grapple



PICTURED: GRX96 (bucket not included)

- Can be fitted to THMBHV & THMBHVX buckets
- Specific heavy duty design for handling large round and square bales
- Opens up to 72"
- Removable / bolt-on mounting posts
- Accommodates 6ft round bales
- Available for 96" and 108" forks or buckets
- Comes with cylinders

Light Duty Root Rake c/w Grapple



PICTURED: RRGLD48

- Light weight with rugged design for compact loaders
- 28" overall height when closed
- 7" centre to centre tine spacing
- Points are ½" thick, AR400 material
- Opens up to 33 ½"
- Comes with 2½" x 8" cylinder
- Available in widths from 48" to 66"

Root Rake c/w Grapple



PICTURED: RRG78

- Two independent grapples for complete clamping on awkward loads
- 34" overall height when closed
- Points are ½" thick, AR400 material
- 7" centre to centre tine spacing
- Opens up to 48 ½"
- Comes with 2½" x 8" cylinders
- Available widths from 66" to 96"

Compact Brush Grapple



PICTURED: BRGC48

- Opens to 38" wide from ground to point of grapple
- Tine tips and grapple tips are AR400 material
- Tine spacing 6" on center
- Single grapple arm
- 28" overall height
- 33" overall depth
- Comes with 2½" x 8" cylinder
- Available widths: 48", 54", 60" and 66"

Brush Grapple



PICTURED: BRG72

- Opens to 48" wide from ground to point of grapple
- Tine tips and grapple tips are AR400 material
- Tine spacing 5.5" between
- Independent grapples for clamping of awkward loads
- Comes with 2½" x 8" cylinders
- Available in widths from 66" to 96"

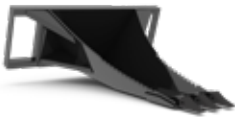
Tree Spade



PICTURED: TS48

- Ideal for transplanting trees and shrubbery
- Scoop made from ¼" material
- 33" wide
- 48" deep
- Approx. weight: 365 lb.

Heavy Duty Stump Bucket



PICTURED: STM

- Designed to rip through roots and remove stumps
- Works well to dig out boulders and dig shallow trenches
- Comes with three replaceable digging teeth
- Serrated side edges
- Optional hydraulic grapple for increased versatility
- Approx. weight: 435 lb.
- Approx. weight with Grapple: 600 lb.

Silage Facer - Frame Mount



PICTURED: SBF072

- Minimum 20 GPM required
- Maximum flow 40 GPM
- Facing drum mounted on a 4 ft frame
- 6, 8 and 10 ft frame optional
- 400 Brinell high tensile steel teeth on drum
- Includes hose kit and flat-faced couplers
- Available widths from 72" to 96"
- Dual Drive Motors
- Heavy duty roller drive chains

Silage Facer - Bucket Mount



PICTURED: MBHVSBF072

- Minimum 20 GPM required
- Maximum flow 40 GPM
- Facing drum mounted on bucket
- 400 Brinell high tensile steel teeth on drum
- Available widths from 72" to 96"
- Dual Drive Motors
- Heavy duty roller drive chains
- Includes hose kit and flat-faced couplers
- 96" Telehandler version available

Bale Knife - Loader Mount



PICTURED: BK60

- Slice bales up to 72" in diameter
- Grabs and retains plastic wrap and net wrap
- Top clamp eliminates "tail" dropping into mixer
- Cuts down TMR processing time up to 30%
- The BK60 and 72 have adjustable bumper to accommodate bales down to 48"
- Individual bolt on knives for easy replacement
- Minimum hydraulic pressure: 2700 PSI

Silage Grapple Bucket



PICTURED: MBHVSG72

- Heavy duty grapple integrated into the bucket design
- Strategic pivoting arc design on the grapple for more power and less disturbance of the bunk silo face
- 3 x 16 cylinders with 1½" diameter pins
- 2" diameter pivot pins on grapple
- ¾" AR400 bolt on grapple teeth
- Available widths from 72" to 108"
- Telehandler version available in 96" & 108" sizes

5000 Series Silage Blade Front Wheel Assist Tractors



PICTURED: FB10

- For front wheel assist tractors only
- Compatible with SB5QDM Series undercarriage blade mounts
- Heavy duty construction with two angle cylinders
- Reversible cutting edge
- Skid shoes are standard
- 58" high blade
 - (34" high mouldboard)
 - (24" high mesh guard)
- 3 x 16 cylinders with 1½" diameter pins
- Available in CAT 2 or 3, three point hitch
- Hyd power tilt optional
- Available widths 10', 12' & 14'

6000 Series Silage Blade Articulated Tractors



PICTURED: Silage Blade with Undermount

The HLA 6000 Series Silage Blade is specifically designed for articulated tractors. This rugged angle blade is particularly suited for moving high volumes of silage when the big harvest comes in. Equipped with hydraulic angle and tilt, this blade evenly cuts across silage bunkers directing materials to create a level area for packing. The Silage Blade is a two piece quick attach style unit consisting of the DMA Undermount custom fitted to each tractor and a rugged DBA silage blade and frame available in a variety of widths.

DMA Undermount

- Tucks in close to the frame for permanent mounting
- Forward mounted hydraulic connectors for ease of connection
- No tool quick attach locking pins secure the blade and frame to the undermount

DBA Silage Blade & Frame

- Dual manual jacks ensures easy hook up and safe storage
- Hydraulic radial lift
- Hydraulic tilt
- Hydraulic angle
- Available widths 14', 16' & 18'
- 63" high blade (42" high mouldboard)
(21" high mesh guard)

Rubber Feed Alley Scraper



PICTURED: RFH60

- Power angle
- Easy on concrete or tiled floor mangers
- 24" high
- Angles 45° either direction
- Available widths from 60" to 84"

Heavy Duty Rubber Free Stall Scraper



PICTURED: RSH60

- Heavy duty rubber for longer life
- Deeper scraper for more volume and smoother operation
- Enclosed frame with splash plate
- 18" high rubber
- Available widths from 60" to 96"

Heavy Duty Rubber Free Stall Scraper (Back Drag)



PICTURED: RSBDH60

- Heavy duty rubber for longer life
- Deeper scraper for more volume and smoother operation
- Back drag allows clean-out of corners
- Enclosed frame with splash plate
- 18" high rubber
- Available widths from 60" to 96"

Hydraulic Adjustable Rubber Scraper



PICTURED: RSHY815

- Heavy duty rubber for longer life
- Hydraulic flow divider for equal movement of wings
- 24" tall rubber
- min. width 8' - max width 15'
- min. width 9' - max width 16'

Hydraulic Rotary Broom



PICTURED: BR72

- Unique lateral and forward float
- Gauge wheels
- Includes hydraulic hoses and flat-faced couplers
- 26" diameter poly/steel bristle wafers
- Hydraulic angle 30° right and left
- Direct motor drive on broom
- Hydraulic requirements: 12-20 GPM @ 1500 - 3000 PSI
- Optional OEM connection wire kit
- Equipped with 50/50 poly steel bristles (optional all poly)
- Optional Kit to reverse broom rotation for sweeping away from doors etc.
- Optional dust suppression water kit available
- Available widths from 60" to 96"

Hydraulic Rotary Pick-Up Broom



PICTURED: BRB84

- Ideal for cleaning up parking lots, construction sites, streets, curbs and gutters as well as parks and recreation areas etc.
- Includes hydraulic hoses and flat-faced couplers
- 26" diameter poly/steel bristle wafers
- Direct motor drive on broom
- Hydraulic requirements: 12-20 GPM @ 1500 - 3000 PSI
- Front gauge wheel
- Reversible broom rotation for sweeping away from doors etc.
- Bucket features a replaceable hardened 3/4 x 6 double bevel cutting edge
- Optional dust suppression water kit available
- Available widths from 60" to 96"

Dust Suppression Kit for Hydraulic Rotary Brooms



PICTURED: BRBWK

- Water kit for dust suppression
- 25 gal tank
- 12 volt electric pump
- 1 wide angle spray nozzle
- Easy infield installation
- BRBWK Rotary Pickup Broom
- BRWK Rotary Broom

Miscellaneous Attachments

PTO Adapter Three Point Hitch



PICTURED: PTOHF

- Adds a hydraulic PTO and three point hitch to any skidsteer
- CAT 1 & 2 compatible
- Ideal for brush cutters & snow blowers etc.
- Complete with adjustable top link
- Includes high flow hose & coupler kit
- High Flow 50-60 HP / 30-40 GPM
- Regular Flow 20-25 HP / 20-25 GPM
- Approx. weight: 440 lb.
- 4,000 lb. capacity
- 2" receiver included

3PH Adapter



PICTURED: 3PHA

- Adapter attaches to loader then allows you to hook up to three point hitch equipment
- Bottom two arms slide for easy hook-up
- Comes with Reese hitch receiver
- Approx. weight: 225 lb.
- Fits CAT 2, three point hitch

Trailer Hitch 2" Receiver



PICTURED: TH2

- 2" Receiver
- Ideal for moving light trailers around the yard
- Ball mount hitch on top of frame for moving goose neck trailers
- Max gross trailer weight: 9,000 lb.
- Max tongue weight: 800 lb.
- Approx. weight: 165 lb.

Tilt Attachment



PICTURED: TAUN

- Mounts between skidsteers and buckets with a universal hitch
- Hydraulic Tilt 18° left and right
- Approx. weight: 425 lb.
- 5,500 lb. capacity

Backhoe - Big Arm Skidsteer



PICTURED: BH600 & SHB12

- Hydraulic swing cylinder with 140° swing
 - Single electric selector valve with universal electro-hydraulic harness kit. 12V or 24V coils available.
 - Second boom mount on side of frame for digging along side foundations etc.
 - Buckets from 9" – 20"
 - BH600 Approx. weight: 435 lb.
- QTach to most skidsteer loaders
 - 6 ft. digging depth

Optional Thumb for Big Arm Backhoe



PICTURED: BH600TH

- Bolts on to Big Arm Backhoe
- Three working positions (manual adj.)
- Pins up against backhoe arm when not in use
- Approx. weight: 78 lb.

Concrete Slab Lifter Bucket



PICTURED: CSB (shown w/ optional thumb)

- Ideal for removing concrete on sidewalks, driveways and construction sites
- Three heavy-duty shanks with replaceable points and rubberized flex pins
- Optional hydraulic thumb for increased versatility
- Approx. weight: 625 lb.

Concrete Funnel Bucket



PICTURED: CFSB60

- Reduces back breaking manual labour
- Transports and cleans up easily
 - Hauls up to 13 cu. ft. of concrete
 - Eliminates the need for a wheelbarrow
 - Works great in tight areas
 - Attaches to most skidsteers
 - Available widths 48", 60", 72", 78"
 - 19" deep x 36" long
 - 12" x 12" discharge opening
 - Approx. weight: 515 lb.

NEW

Concrete Hopper Bucket



PICTURED: CHB54

- Reduces back breaking manual labour
- Hauls up to 15 cu. ft. of concrete
- Eliminates the need for a wheelbarrow
- Works great in tight areas
- Attaches to most skidsteers
- Easy to attach and use
- Outside hopper dimensions 55" wide, 25" long, 23" high
- 30" long swinging discharge chute
- 13" x 5" discharge opening
- Hydraulic discharge gate control

Pallet Forks

Light Duty Pallet Fork (900 LB.)



PICTURED: HD0936

- 1-3/16" x 3-1/8" Class II hook type solid fork lift tines
- 36", 42", or 48" tine lengths
- 900 lb. capacity @ 21" L.C.
- Sliding adjustable
- Tines can be locked in any position
- 50" wide carriage

Light Duty Pallet Fork (1,200 LB.)



PICTURED: HD1242

- 1-3/16" x 3 1/8" Class II hook type solid fork lift tines
- 36", 42", or 48" tine lengths
- 1,200 lb. capacity @ 24" L.C.
- Sliding adjustable
- Tines can be locked in any position
- 50" wide carriage

Heavy Duty Pallet Fork (2,000 LB.)



PICTURED: HD2042

- 1½" x 3 1/8" Class II hook type solid fork lift tines
- 36", 42", or 48" tine lengths
- 2,000 lb. capacity @ 24" L.C.
- c/w guard
- 50" wide carriage

Heavy Duty Pallet Fork (4,200 LB.)



PICTURED: HD4248

- 1-3/8" x 4" Class II hook type solid fork lift tines
- 42" or 48" tine lengths
- 4,200 lb. capacity @ 20" L.C.
- c/w guard
- 50" wide carriage
- Sliding adjustable
- Tines can be locked in any position
- Full Back Guard Option (Brick Guard) available

Heavy Duty Pallet Fork (5,500 LB.)



PICTURED: HD5548

- 1½" x 4" Class II hook type solid fork lift tines
- 42", 48", 54", 60", or 72" tine lengths
- 5,500 lb. capacity @ 24" L.C.
- c/w guard
- 50" wide carriage
- Sliding adjustable
- Tines can be locked in any position
- Full Back Guard Option (Brick Guard) available

Heavy Duty Pallet Fork (7,500 LB.)



PICTURED: HD7548

- 1¾" x 5" Class III hook type solid fork lift tines
- 48", 54", 60", or 72" tine lengths
- 7,500 lb. capacity @ 24" L.C.
- c/w guard
- 50" wide carriage
- Sliding adjustable
- Tines can be locked in any position
- Full Back Guard Option (Brick Guard) available

Heavy Duty Pallet Fork (10,000 LB.)



PICTURED: HD10048

- 2" x 6" Class III hook type solid fork lift tines
- 48", 54", 60", or 72" tine lengths
- 10,000 lb. capacity @ 24" L.C.
- c/w guard
- Sliding adjustable
- Tines can be locked in any position
- 50" wide carriage
- Full Back Guard Option (Brick Guard) available

Rotating Pallet Fork



PICTURED: HDR5548

- Rotation is powered by a cylinder for smooth and contoured operation
- Adjustable tines
- Rotates 180° for a full dump to the left
- 2,000 lb. cap. carriage with 42" tines
- 4,200 lb. cap. carriage with 42" or 48" tines
- 5,500 lb. cap. carriage with 42", 48", or 54" tines

Pallet Forks

Side Shift Pallet Fork



PICTURED: HDS5548

- Hydraulic carriage side shift
- 16" travel (8" right or left)
- Adjustable tines
- 4,200 lb. cap. carriage with 42" or 48" tines
- 5,500 lb. cap. carriage with 42", 48", or 54" tines

Power Tine Pallet Fork



PICTURED: HDN7554

- Hydraulic sliding tines
- Ideal for clamping (Such as a root ball in nurseries etc.)
- Hydraulic powered tines move in and out equally
- 4,200 lb. cap. carriage with 42" or 48" tines
- 5,500 lb. cap. carriage with 42", 48", or 54" tines
- 7,500 lb. cap. carriage with 48", 54", or 60" tines

Single Arm Log Grapple



PICTURED: LGSA

- Removable log grapple for pallet forks
- Clamps onto Class II or III fork frame (walk through guards only)
- c/w Hydraulic cylinder

Log Grapple



PICTURED: LG5542

- Grapple version of HD55/HD75 pallet fork
- 42" solid fork lift tines
- 5,500/7,500 lb. capacity
- c/w HD Cylinders

Power Tilting Pallet Fork



PICTURED: HD05542

- Rotation is powered by a cylinder for smooth operation
- Adjustable tines
- Levels 45° each way
- Great for uneven jobsites
- 5,500 lb. cap. with 42", 48", or 54" tines
- 7,500 lb. cap. with 48" or 54" tines

Pallet Fork Tine Standard Extensions



PICTURED: HDEX6 (fork not included)

- Fits HD42 & HD55 forks
- Available in 6' or 8' lengths
- NOTE: Tine extensions reduce the capacity of your pallet fork

Pallet Fork Tine Nursery Extensions



PICTURED: HDNEX6 (fork not included)

- Fits HD42 & HD55 forks
- With angle pad for gentle clamping of root balls, etc
- Available in 6' or 7' lengths
- NOTE: Tine extensions reduce the capacity of your pallet fork

Bucket Pallet Fork



PICTURED: BFT6544 (bucket not included)

- Adaptable to most buckets
- No tools or bolts needed
- 1,000 lb. capacity (3" x 2" x 32" long)
- 2,000 lb. capacity (4" x 2" x 44" long)

Dirt Blade / Laser Grader / Limb Saw

Heavy Duty Dirt Blade



PICTURED: DB84 w/ standard power tilt

- Ideal for skidsteers and front end loaders
- Heavy duty construction with two angle cylinders
- 35° hydraulic angle left and right
- Reversible cutting edge
- 24" high mouldboard
- Standard: Blade oscillates 5° hydraulically either way for side leveling (Includes electric selector valve)
- Bolt-on skid shoes
- Available widths 72", 84", and 96"

Skidsteer Laser Grader



PICTURED: SLG84

- Push-pull design for grading in forward or reverse
- Pneumatic swivel wheels with tapered roller bearings on king pins, on oscillating front axle
- Tapered roller bearings on axle oscillation pivot
- Removable shims on main oscillation pivot to keep wear joint tight
- Two 2 1/2" x 6" cylinders provide cross-slope operation
- Reversible cutting edges
- Universal laser mast mount
- Levels consistently within 1/4" of target grade
- Control valve included, does not include laser or grade control electronics
- Approx. weight: 1,610 lb.

Hydraulic Limb Saw



PICTURED: HLS1224

- Cut tree limbs from the safety of your skidsteer or tractor
- Automatic chain oiler
- Standard Stihl 25" guide bar and saw chain for easy replacement
- Up to 14' reach with spring tension cut assist
- Requires 15 GPM @ 3000 PSI
- RPM: 2550 @ 15 GPM
- Power: 22 hp
- Torque: 45 ft-lb

Three Point Hitch Weight Box



PICTURED: 3PHC2WB838

- Comes with cross bar for quick-hitch system
- Bolt-on top lid for ease of filling
- 5 cu. ft. CAT 1 or 2
- 8.38 cu. ft. CAT 2

Boom Pole Telescopic (Standard Activated)



PICTURED: BP120

- 6 ft main boom with a 4 ft telescopic boom
- 3,000 lbs capacity closed / 1,500 lbs capacity extended
- Five position telescopic boom
- Pintle end hook with spring-loaded locking arm & pin
- Approximate weight: 370 lbs

Boom Pole Telescopic (Hydraulic Activated)



PICTURED: BPHA240

- 13½ ft main boom with hydraulically controlled 6½ ft telescopic boom
- 3,000 lbs capacity closed / 1,500 lbs capacity extended
- Pintle end hook with spring-loaded locking arm & pin
- Approximate weight: 775 lbs

NEW

Bulk Bag Handler

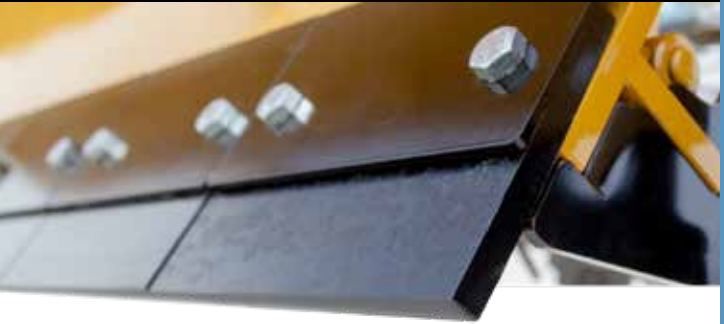


PICTURED: BBH5

- Designed to move bulk tote bags safely
- Fits most skidsteers and loaders
- 5,000 lbs capacity



**MAXIMIZE
CONTACT
CLEAR SNOW**



Ride the Edge

Plowing with an EdgeFlex is easy; just lay the blade down and run. While you worry about blade placement and controlling the direction of the flowing snow, HLA's EdgeFlex technology works its way across the surface, adapting to the surface contours for cleaner results.

1.5" Vertical Lift

Each EdgeFlex section is able to move up 1.5".

5° Tilt

Each section tilts 5° in either direction to easily adapt to uneven surfaces.



Designed for easy field service, each section of cutting edge uses 2B2N maintenance. This simple 2 Bolt - 2 Nut design makes maintaining each 12" section an easy one person job. Removing the hardware, which holds the retaining plate in place, allows for easy access to the individual components for that section. Designed for harsh conditions, the EdgeFlex is backed by HLA Snow's 2 year warranty.

Available on select blades. For warranty details, contact HLA Snow.

V-Blades SixWay Blade

V-Blade



PICTURED: VP60

- Replaceable 5/8" AR400 cutting edge
- QTach or direct fit to accept most makes of loaders
- 24" high mouldboard
- Sliding hinge allows blade to follow contour of surface
- Optional 6" side flares available
- Approx. weight: 560 lb. (60" w/ flares)
- Available widths 48" 54" 60"
- Includes abrasion and wear-resistant AR400 nose and skid shoes

3600 Series 6-Way Snow Blade



PICTURED: SB3600V60

Max Operating Weight 10,000 LB.

- Ideal sidewalk blade for compact tractors & skidsteers
- Replaceable, reversible steel cutting edge
- 35° angle with cross-over relief valve protection
- 30" high mouldboard with lateral float
- Includes abrasion and wear-resistant AR400 skid shoes
- Spring trip cutting edge
- Single electric selector valve with electro-hydraulic harness kit. 12V or 24V coils available
- C/w 5/8" AR600 cutting edge
- Available widths 54" 60" 66" 72" 78" 84"
- 2 Year Commercial Warranty

4600 Series 6-Way Snow Blade



PICTURED: SB4600V10

Max Operating Weight 25,000 LB.

- Ideal for small roadways & driveways
- Replaceable, reversible steel cutting edge
- Spring trip cutting edge
- 35° angle with cross-over relief valve protection
- 34" high mouldboard with lateral float
- Includes abrasion and wear-resistant AR400 skid shoes
- Single electric selector valve with electro-hydraulic harness kit. 12V or 24V coils available
- Reversible 3/4" Hardox 450 cutting edge
- Available widths 96" 108" 120" 144"
- 2 Year Commercial Warranty

HS100 Series Scatter Shot



PICTURED: HS100

- Efficient six vane stainless steel spinner
- Capacity: ½ yard
- Width: 48"
- Spread width: 3-40'
- Hydraulic requirements: 5-20 GPM @ 2000-3000 PSI
- Hoses and couplers included with hydraulic drive models
- Available in self loading hydraulic drive or 3PH mount PTO drive (non self loading)
- 13" Skidsteer quick attach spacer
- Optional hydraulic shut off gate available
- Optional vinyl hopper cover

HS200 Series Scatter Shot



PICTURED: HS200

- Efficient six vane stainless steel twin spinners
- Capacity: 1½ yards
- Width: 86"
- Spread width: 6-60'
- Hydraulic requirements: 5-20 GPM @ 2000-3000 PSI
- Hoses and couplers included with hydraulic drive models
- Available in self loading hydraulic drive or 3PH mount PTO drive (non self loading)
- Optional hydraulic shut off gate available

High Volume Skidsteer Snow Bucket



PICTURED: SBSN72

- 3/16" material, ¼" end plates
- 3/4 x 4 bevelled cutting edge
- Reinforced top lip
- 39" deep, 31" high
- Screened back for better visibility
- Reinforced round back and end plates for strength, easy filling & clean out
- Flat top acts as level indicator
- Tapered end plates are self-cleaning and reduces material build-up
- Drilled for standard bolt on cutting edge
- Available widths from 60" to 120"

High Volume Skidsteer Snow Basket



PICTURED: SBSB72

- Profile 39" deep and 31" high
- Tapered end plates
- Tall rounded end plates for increased capacity
- Excellent operator visibility
- Drilled for standard bolt on cutting edge
- Available widths from 60" to 120"

Snow Blades

1000 Series Snow Blade



PICTURED: SB100060

Recommended HP 20-40
Max Operating Weight 3,000 LB.

- Spring trip on mouldboard
- 20" high mouldboard
- Lateral float
- 35° manual angle either direction (hydraulic optional)
- Replaceable, reversible steel cutting edge
- Replaceable, reversible rubber cutting edge (Optional)
- Adjustable skid shoes
- Available in 48" 54" 60" 66" 72" 78" 84" 90" 96" widths
- HLA2DM mounting option

2000 Series Snow Blade



PICTURED: SB200072

Recommended HP 30-50
Max Operating Weight 5,000 LB.

- Spring trip on mouldboard
- 24" high mouldboard
- Lateral float
- Hydraulic 35° angle either direction
- Replaceable, reversible steel cutting edge
- Replaceable, reversible rubber cutting edge (Optional)
- Adjustable skid shoes
- Cross-over relief valve protection
- Available in 60" 72" 78" 84" 90" 96" widths
- HLA2DM mounting option

3000 Series Snow Blade



PICTURED: SB300007

*EdgeFlex model available
(see pg. 46)*

Max Operating Weight 13,000 LB.

- Spring trip on cutting edge
- 30" high mouldboard
- Lateral float
- Two angle cylinders
- Hydraulic 35° angle either direction
- Reversible cutting edge (non Edge Flex only)
- Adjustable skid shoes (non Edge Flex only)
- Cross-over relief valve protection
- Available in 6' 7' 8' 9' 10' widths
- Available in rubber edge models
- 2 Year Commercial Warranty

4000 Series Snow Blade



PICTURED: SB400010
EdgeFlex model available
(see pg. 46)

Max Operating Weight 25,000 LB.

- Spring trip on cutting edge
- 34" high mouldboard
- Lateral float
- Two angle cylinders
- Hydraulic 35° angle either direction
- Reversible cutting edge (non Edge Flex only)
- Cast highway skid shoes (non Edge Flex only)
- Cross-over relief valve protection
- Heavy duty construction
- Available in 9' 10' 12' 14' widths
- Available in rubber edge models
- 2 Year Commercial Warranty

5000 Series Snow Blade



PICTURED: SB500012
EdgeFlex model available
(see pg. 46)

Max Operating Weight 40,000 LB.

- Spring trip on cutting edge
- 42" high mouldboard
- Lateral float
- Two 3 x 16 angle cylinders
- Nitrate rods on angle cylinders
- Hydraulic 35° angle either direction
- Reversible cutting edge (non Edge Flex only)
- Cast highway skid shoes (non Edge Flex only)
- Cross-over relief valve protection
- Heavy duty construction on mouldboard framework and tripping edge
- Available in 9' 10' 12' 14' 16' 18' widths
- Available in rubber edge models
- 2 Year Commercial Warranty

6000 Series Snow Blade



PICTURED: SB600012
EdgeFlex model available
(see pg. 46)

Max Operating Weight 60,000 LB.

- Spring trip on cutting edge
- 53" high mouldboard
- Lateral float
- Two angle cylinders
- Nitrate rods on angle cylinders
- Hydraulic 35° angle either direction
- Reversible cutting edge (non Edge Flex only)
- Cast highway skid shoes (non Edge Flex only)
- Cross-over relief valve protection
- Heavy duty construction
- Available in 10' 12' 14' 16' 18' or 20' widths
- Available in rubber edge models
- 2 Year Commercial Warranty

Snow Pushers

1500 Series Snow Pusher



PICTURED: SP150060

Max Operating Weight 3,000 LB.

- Double sidewall, slim brace design for reduced material build-up
- Bucket edge mount or Qtach available
- 20 " high mouldboard
- 18" deep fixed end plates
- Replaceable, reversible cutting edge
- Adjustable/ replaceable skid bars
- Available in 54" 60" 66" or 72" widths
- Available in rubber edge models
- Bolt-on attachment frame has 3 angle settings (80°, 90°, 100°)

1500 Series Turf Snow Pusher



PICTURED: SP1500T60

Max Operating Weight 3,000 LB.

- Smooth contact edge is ideal for clearing snow from turf sports fields
- Smooth round pipe replaces the cutting edge and runner
- Bucket edge mount or QTach available

1800 Series Snow Pusher



PICTURED: SP180072

Max Operating Weight 4,000 LB.

- Double sidewall, slim brace design for reduced material build-up
- Bucket edge mount or Qtach available
- 24 " high mouldboard
- 21" deep fixed end plates
- Replaceable, reversible steel cutting edge
- Adjustable/ replaceable skid bars
- Available in 60" 72" or 84" widths
- Available in rubber edge models
- Bolt-on attachment frame has 3 angle settings (80°, 90°, 100°)

2500 Series Snow Pusher



PICTURED: SP2500R72

Max Operating Weight 6,000 LB.

- Replaceable, reversible cutting edge
- Bucket edge mount or QTach available
- Double sidewall, slim brace design for reduced material build-up
- 30" high mouldboard
- 30" deep fixed end plates
- Adjustable / replaceable skid bars
- Available in rubber edge models
- Bolt-on attachment frame has 4 angle settings (80°, 90°, 100°, 110°)
- Available in 72" 84" or 96" widths

2500 Series Turf Snow Pusher



PICTURED: SP2500T72

Max Operating Weight 6,000 LB.

- Smooth contact edge is ideal for clearing snow from turf sports fields
- Smooth round pipe replaces the cutting edge and runner
- Bucket edge mount or QTach available

3500 Series Snow Pusher



PICTURED: SP350008

Max Operating Weight 15,000 LB.

- Reversible cutting edge (non Edge Flex only)
- Spring trip cutting edge
- Double sidewall, slim brace design for reduced material build-up
- Bucket edge mount or QTach available
- 38" high mouldboard
- 36" deep fixed end plates
- High tensile AR400 adjustable steel skidbars
- Available in rubber edge models
- 2 Year Commercial Warranty
- Bolt-on attachment frame has 4 angle settings (80°, 90°, 100°, 110°)
- Available in 7' 8' 9' 10' 12' widths

EdgeFlex model available (see pg. 46)

Snow Pushers

4500 Series Snow Pusher



PICTURED: SP450010

EdgeFlex model available (see pg. 46)

Max Operating Weight 25,000 LB.

- 34" high mouldboard
- 36" deep fixed end plates
- Double sidewall, slim brace design for reduced material build-up
- Replaceable, reversible steel cutting edge (not reversible on Edge Flex models)
- Spring trip cutting edge
- Bucket edge mount or QTach available
- High tensile AR400 adjustable steel skidbars (floating skidbars on Edge Flex models)
- Available in rubber edge models
- 2 Year Commercial Warranty
- Available in 10' 12' 14' widths

5500 Series Snow Pusher



PICTURED: SP550010

EdgeFlex model available (see pg. 46)

Max Operating Weight 40,000 LB.

- 42" high mouldboard
- 44" deep fixed end plates
- Double sidewall, slim brace design for reduced material build-up
- Replaceable, reversible steel cutting edge (not reversible on Edge Flex models)
- Spring trip cutting edge
- Bucket edge mount or QTach available
- High tensile AR400 adjustable steel skidbars (floating skidbars on Edge Flex models)
- Available in rubber edge models
- 2 Year Commercial Warranty
- Available in 10' 12' 14' 16' 18' widths

5505 Series Snow Pusher



PICTURED: SP550510

EdgeFlex model available (see pg. 46)

Max Operating Weight 40,000 LB.

- 42" high mouldboard
- 60" deep fixed end plates
- Double sidewall, slim brace design for reduced material build-up
- Replaceable, reversible steel cutting edge (not reversible on Edge Flex models)
- Spring trip cutting edge
- Bucket edge mount or QTach available
- High tensile AR400 floating steel skidbars
- Available in rubber edge models
- 2 Year Commercial Warranty
- Available in 10' 12' 14' 16' 18' widths

6500 Series Snow Pusher



PICTURED: SP650010

Max Operating Weight 60,000 LB.

- 53" high mouldboard
- 48" deep fixed end plates
- Double sidewall, slim brace design for reduced material build-up
- Replaceable, reversible steel cutting edge (not reversible on Edge Flex models)
- Spring trip cutting edge
- Bucket edge mount or QTach available
- High tensile AR400 adjustable steel skidbars (floating skidbars on Edge Flex models)
- Available in rubber edge models
- 2 Year Commercial Warranty
- Available in 10' 12' 14' 16' 18' 20' widths

EdgeFlex model available (see pg. 46)

Snow Pusher Back Drag Option

- Add the bolt-on back drag option to your Snow Pusher
- Ideal for back dragging away from doors and loading docks
- Edges are drilled for either rubber or steel optional bolt on cutting edge
- Welded steel edge on back drag
- Available for most models except 3500X, 5505, 6500



PICTURED: SP35007BDK

Pusher shown in push position.



PICTURED: SP35007BDK

Pusher shown rotated in back drag position.

Rear Three Point Hitch Mount



PICTURED: SP3500PT3PHC2 on a SP350008

- Utilize your pusher as a pull unit
- Available on all 2500 & 3500 pushers
- Ideal for cleaning away from doors & loading docks
- SP2500 fits both Cat 1 & 2
- SP3500 fits Cat 2
- Approx. weight: 375 lbs.

3500X Series Expandable Snow Pusher



PICTURED: SP3500X610

Max Operating Weight 10,000 LB.

- Built in back drag with top rubber edge
- Bolt-on attachment frame has 4 angle settings (80°, 90°, 100°, 110°)
- Inner moldboards hydraulically expand up to 48" wider from closed position
- 24" high mouldboard
- 16" deep fixed end plates
- Trip cutting edge with compression springs - can be adjusted for tension
- Fixed side and back drag skid shoes to assist in keeping pusher level so that all cutting edges wear evenly
- Rubber cutting edge option for top and bottom
- Hydraulics - flow divider valve
- Available in 6', 7' and 8' widths
- 2 Year Commercial Warranty

3530W Series Snow Pusher with Wings



PICTURED: SP3530W813

Max Operating Weight 13,000 LB.

- Spring trip on cutting edge
- 21,000 in-lb torque at 3000 PSI hydraulic rotary actuators on wing pivots—infinite wing adjustment from 0° - 180°
- 30" high mouldboard
- Lateral float
- Reversible cutting edge (non Edge Flex only)
- Adjustable skid shoes (non Edge Flex only)
- Cross over relief valve protection
- Maximum clearing width 5' wider than main mouldboard width
- Wings 30" deep / wide
- Available in 6' 7' 8' 9' 10' widths
- Available in rubber edge models
- Actuator has 21,000 in-lb Torque at 3000 psi - Patented
- Single electric selector valve with electro-hydraulic harness kit. 12V or 24V coils available.
- 2 Year Commercial Warranty

EdgeFlex model available (see pg. 46)

3230W Series Snow Wing



PICTURED: SB3230W813

- Actuator has 21,000 in-lb. Torque at 3000 psi - Patented
- 2 Year Commercial Warranty

EdgeFlex model available (see pg. 46)

Max Operating Weight 13,000 LB.

- Double electric selector valve with electro-hydraulic harness kit. 12V or 24V coils available.
- Front tire protector - patented feature
- Hydraulic rotary actuators on wing pivots— infinite wing adjustment from 0° to 180° - patented feature
- Same features as 3000 series blade
- Maximum clearing width 5' wider than main mouldboard width
- Wings 30" deep/wide
- Available in 6', 7', 8', 9' and 10' widths

4203W Series Snow Wing



PICTURED: SB4203W1016

- Available in 8', 9', 10', 12' and 14' widths
- Actuator has 38,720 in-lb. Torque at 3000 psi - Patented
- 2 Year Commercial Warranty

EdgeFlex model available (see pg. 46)

Max Operating Weight 25,000 LB.

- Double electric selector valve with electro-hydraulic harness kit. 12V or 24V coils available.
- Front tire protector - patented feature
- Hydraulic rotary actuators on wing pivots— infinite wing adjustment from 0° to 180° - patented feature
- Same features as 4000 series blade
- Nitrate rods on angle cylinders
- Maximum clearing width 6' wider than main mouldboard width
- Wings 36" deep/wide
- Cast highway skid shoes (non Edge Flex only)

4205W Series Snow Wing



PICTURED: SB4205W1020

- Comes with removable top sections on wings to allow for clearance under 5th wheel pins on trailers
- Actuator has 54,200 in-lb. Torque at 3000 psi - Patented
- 2 Year Commercial Warranty

EdgeFlex model available (see pg. 46)

Max Operating Weight 25,000 LB.

- Includes standard features of the 4203W
- Front tire protector - patented feature
- Hydraulic rotary actuators on wing pivots— infinite wing adjustment from 0° to 180° - patented feature
- Maximum clearing width 10' wider than main mouldboard width
- Double electric selector valve with electro-hydraulic harness kit. 12V or 24V coils available.
- Wings 60" deep / wide
- Cast highway skid shoes (non Edge Flex only)
- Available in 8', 9', 10', 12' and 14' widths
- Great for large sites where greater clearing width is required while being able to narrow down for smaller areas

5203W Series Snow Wing



PICTURED: SB5203W1016

Max Operating Weight 40,000 LB.

- Double electric selector valve with electro-hydraulic harness kit. 12V or 24V coils available.
- Front tire protector - patented feature
- Hydraulic rotary actuators on wing pivots— infinite wing adjustment from 0° to 180° - patented feature
- Same features as 5000 series blade
- Nitrate rods on angle cylinders
- Maximum clearing width 6' wider than main mouldboard width
- Wings 36" deep/wide
- Cast highway skid shoes (non Edge Flex only)
- Available in 9', 10', 12', 14' and 16' widths
- Actuator has 38,720 in.-lb. Torque at 3000 psi – Patented
- 2 Year Commercial Warranty

EdgeFlex model available (see pg. 46)

5205W Series Snow Wing



PICTURED: SB5205W1020

Max Operating Weight 40,000 LB.

- Includes standard features of the 5203W
- Front tire protector - patented feature
- Hydraulic rotary actuators on wing pivots— infinite wing adjustment from 0° to 180° - patented feature
- Maximum clearing width 10' wider than main mouldboard width
- Wings 60" deep / wide
- Cast highway skid shoes (non Edge Flex only)
- Available in 9', 10', 12', 14' and 16' widths
- Great for large sites where greater clearing width is required while being able to narrow down for smaller areas
- Comes with removable top sections on wings to allow for clearance under 5th wheel pins on trailers
- Actuator has 54,200 in.-lb. Torque at 3000 psi – Patented
- Double electric selector valve with electro-hydraulic harness kit. 12V or 24V coils available.
- 2 Year Commercial Warranty

EdgeFlex model available (see pg. 46)

6205W Series Snow Wing



PICTURED: SB6205W1020

Max Operating Weight 60,000 LB.

- Double electric selector valve with electro-hydraulic harness kit. 12V or 24V coils available
 - Hydraulic rotary actuators on wing pivots— infinite wing adjustment from 0° to 180° - patented feature
 - Front tire protector - patented feature
 - 180° Rotation
 - Crossover relief valve
 - Floating end plate edge
 - Lateral float
 - Mouldboard profile
 - Nitrate rods on angle cylinders
 - 53" high mouldboard
 - Wings 60" deep/wide
 - Reversible cutting edge (non Edge Flex only)
 - Cast highway skid shoes (non Edge Flex only)
 - Spring trip cutting edge
 - Floating blade hinge
 - Available widths: 10', 12', 14', 16', 18' and 20'
 - Actuator has 54,200 in-lb. Torque at 3000 psi – Patented
 - 2 Year Commercial Warranty
- EdgeFlex model available (see pg. 46)*

Wiring Options / Blade Options

Electrical Wiring Kit (7, 8, or 14 Pin) For OEM Connection



PICTURED: 14 pin wire kit



PICTURED: 7 pin Bobcat kit

- To connect into your OEM auxiliary electric controls

Available for:

- ASV
- Bobcat
- Case
- Caterpillar
- Gehl
- JCB
- John Deere
- Kubota
- Merlo
- New Holland
- Takeuchi
- Volvo
- Wacker Neuson

Foot Switch



PICTURED: Foot Switch

The Foot Switch is a direct replacement for the 3-way toggle switch traditionally used to control the diverter valve on SnowWing plows.

- Available as a field install kit to retrofit from a 3-way toggle switch, or as an upgrade option with a new plow order

Floating Blade Hinge



PICTURED: Floating Blade Hinge

- This option adds a mechanical float to the blade. This allows the blade to better follow the surface contour. The float is designed to be simply locked out when not needed by rolling the blade forward.

Curb Runner



PICTURED: Curb Runner

- Protects wings and/or cutting edges from potential wear from rubbing against curbs etc.

Spill Guard Option



PICTURED: SB52W9SG

- Bolt-on
- For 3000 & 3230W (10" high)
- For 4000 & 4203W & 4205W (12" high)
- For 5000 & 5203W & 5205W (12" high)
- For 6000 & 6205W (12" high)

Snow Blade Markers



PICTURED: SBM27

- 27" high
- Can be mounted on most blades (Will not adapt to manual flip up end plates)

Carbide Tipped Cutting Edges



PICTURED: 346CCE

- Carbide tipped edges are designed for heavy commercial use. This non reversible cutting edge is suited for heavy duty clearing on concrete or asphalt.

Cast Highway Skid Shoe



PICTURED: LWHSKP

- Optional for non Edge Flex 4500, 5500, 5505 and 6500 Series Pushers
- Long wearing properties for extended life span

AR400 Skid Shoes



PICTURED: SB1075

- Available only for non Edge Flex 4000, 4203W, 4205W, 4500, 5000, 5203W, 5205W, 5500, 5505, 6000, 6205W, 6500 series blades
- Large pad style skid shoes for better floatation on soft surfaces

Quick Disconnect Mounts

Quick Attach Snow Blade Mounts

The HLA Quick Attach Snow Blade Mount is securely connected to both the front and rear of your tractor. Relying on the rear of the mount, the force is pushed through the drawbar from the front of the mount providing incredible pushing strength. With parallel linkage, you can rest assured that the blade will always remain parallel to the ground whether it's raised for stacking snow or at full angle.

The quick release design relies on front and rear adapter brackets fitted to the tractors chassis. With the hydraulics connected, down pressure on the blade allows you to raise the undermount aligning it with the front bracket. Once engaged reversing the pressure raises the rear of the undermount locking it into the rear bracket.

Available for most makes, the undercarriage mount includes all hardware, hose kits and electro - hydraulic wire kit allowing for easy installation.



SB2QDM Quick Attach Snow Blade Mounts



- Recommended Tractor size: 3,000 to 5,000 lbs.
- Heavy duty parallel linkage for optimum lifting height
- Package includes all mounting hardware and hose kits
- Mount kits available for most tractor makes, call dealer for details
- Soft ride accumulator standard
- Blade remains parallel to ground even at full angle and raised
- Extra height for piling snow
- Quick Release system allows for removal of the complete under mount in minutes

SB3QDM Quick Attach Snow Blade Mounts



- Recommended Tractor size: 5,000 to 13,000 lbs.
- Heavy duty parallel linkage for optimum lifting height
- AO600 Euro quick attach for attachments is standard
- Package includes all mounting hardware and hose kits
- Mount kits available for most tractor makes, call dealer for details
- Soft ride accumulator standard
- Blade remains parallel to ground even at full angle and raised
- Extra height for piling snow
- Quick Release system allows for removal of the complete under mount in minutes

SB4QDM Quick Attach Snow Blade Mounts



- Recommended Tractor size: 13,000 to 22,000 lbs.
- Heavy duty parallel linkage for optimum lifting height
- AO600 Euro quick attach for attachments is standard
- Package includes all mounting hardware and hose kits
- Mount kits available for most tractor makes, call dealer for details
- Soft ride accumulator standard
- Blade remains parallel to ground even at full angle and raised
- Extra height for piling snow
- Quick Release system allows for removal of the complete under mount in minutes

SB5QDM Quick Attach Snow Blade Mounts



- Recommended Tractor size: 22,000 to 40,000 lbs.
- Heavy duty parallel linkage for optimum lifting height
- JRB416 industrial mount for attachments is standard
- Package includes all mounting hardware and hose kits
- Mount kits available for most tractor makes, call dealer for details
- Soft ride accumulator standard
- Blade remains parallel to ground even at full angle and raised
- Extra height for piling snow
- Quick Release system allows for removal of the complete under mount in minutes

Under Mounts

Undercarriage Mounts for older tractors



PICTURED: SB4000DM

- Heavy duty parallel linkage for optimum lifting height
- AO600 Euro quick attach for attachments is standard on 3000 & 4000 series
- JRB416 industrial mount quick fit plate for attachments is standard on 5000 series
- Package includes all mounting hardware and hose kits
- Mounts available for most makes
- Soft ride accumulator standard feature on 3000/4000 & 5000 series
- Blade remains parallel to ground even at full angle and raised
- Extra height for piling snow

SB2000DM Snow Blade Mount



- SB2000DM Snow Blade Mount is designed to work exclusively with the HLA2DM mounting option for the SB1000 & 2000 series snow blades and other select HLA products.
- The single pin QTach design allows for uncomplicated mounting and dismounting of the snow blade.
- Available for most makes, the SB2000DM mount with HLA2DM mounting option includes all hardware and hose kits allowing for easy installation.

SB2000DM features:

- QTach from blade to snow blade mount is standard.
- Mounts available for most makes, call dealer for details.

HLA2DM features:

- Angle and lift hydraulics.
- Cross over relief valve – protects blade and tractor.
- Radial hydraulic lift
- Lateral Float: allows blade to follow ground contours.
- Mounting hardware and hose kits included.

Hydraulic Rotary Broom



PICTURED: BR72

- Unique lateral and forward float
- Gauge wheels
- Includes hydraulic hoses and flat-faced couplers
- 26" diameter poly/steel bristle wafers
- Hydraulic angle 30° right and left
- Direct motor drive on broom
- Hydraulic requirements: 12-20 GPM @ 1500 - 3000 PSI
- Optional OEM connection wire kit
- Equipped with 50/50 poly steel bristles (optional all poly)
- Optional Kit to reverse broom rotation for sweeping away from doors etc.
- Optional dust suppression water kit available
- Available widths from 60" to 96"



PRODUCT CATALOGUE

1-866-567-4162

www.horstwelding.com

AUTHORIZED DEALER

